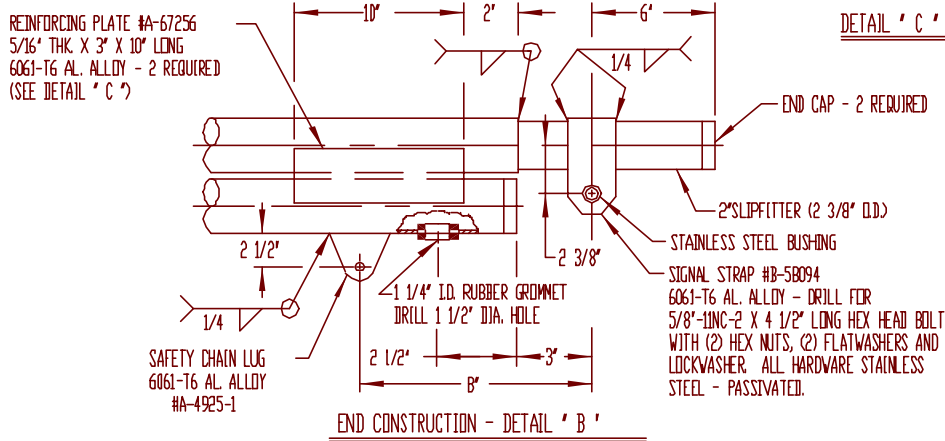
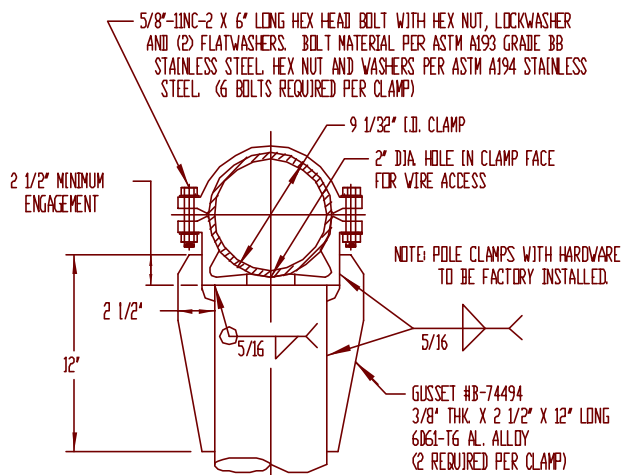
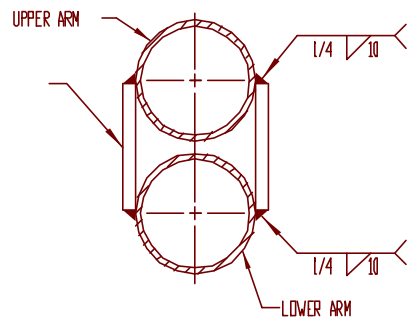


NOTE:  
 1.- USE 4043 WELD WIRE.  
 2.- 6063 ASSEMBLY .375 WALL OR LESS TO BE HEAT-TREATED TO T6 TEMPER AFTER WELDING.

SEE DETAIL 'A'  
 TYP 1/4  
 7 5/8" X 3 1/2"  
 APPROX. CROSS-SECTION  
 WIRE INLET - SEE DETAIL 'D'  
 EXTRUDED ARM CLAMP #C-96855  
 6063-T6 AL. ALLOY - 2 REQUIRED  
 EXTRUDED POLE CLAMP #C-96856  
 6063-T6 AL. ALLOY - 2 REQUIRED

REINFORCING PLATE - 2 REQUIRED  
 5/16" THK X 3" X 10" LONG  
 6061-T6 AL. ALLOY



P&K

P&K POLE PRODUCTS, INC. 84 Foundry St., Newark, N.J.				
TITLE 20 FT. MAST ARM ASSEMBLY MA2060890-10				
BY A.D.C.	DATE 07-22-80	SCALE NONE	DWG. NO. C-76142	
CHKD V.V.W.	DATE 07-22-80	PROJECT NEW JERSEY DEPT. OF TRANSPORTATION		